

**TOM LACK MULTIHULL
B R O K E R A G E**



12 metre CATALAC - STANDARD SPECIFICATIONS

Length Overall	12.5 m.	Sail Areas: Mainsail 336 sq.ft.(31.21 sq.m.)
Beam	5.4 m.	No.1 Jib 349 sq.ft.(32.42 sq.m.)
Draught	0.91m.	Genoa 410 sq.ft.(38.09 sq.m.)
Weight	7.5 tonnes	Berths: 1 or 2 Double. 2 or 4 Single

Anodised aluminium mast & boom with Slab reefing on mainsail. 2-speed halliard Winches. s.s. Rigging. Polyester running rigging. Roller reefing Headsail gear. Whisker Pole. Mainsail, Genoa and Jib. Sailcover. 20 kg. Bruce anchor & hand-operated Windlass. Fenders. Mooring Warps. Boathook. Stanchions & Guardrails. Boarding Ladder. Safety Harness track in s.s. Stainless steel Pushpits and Pulpit.

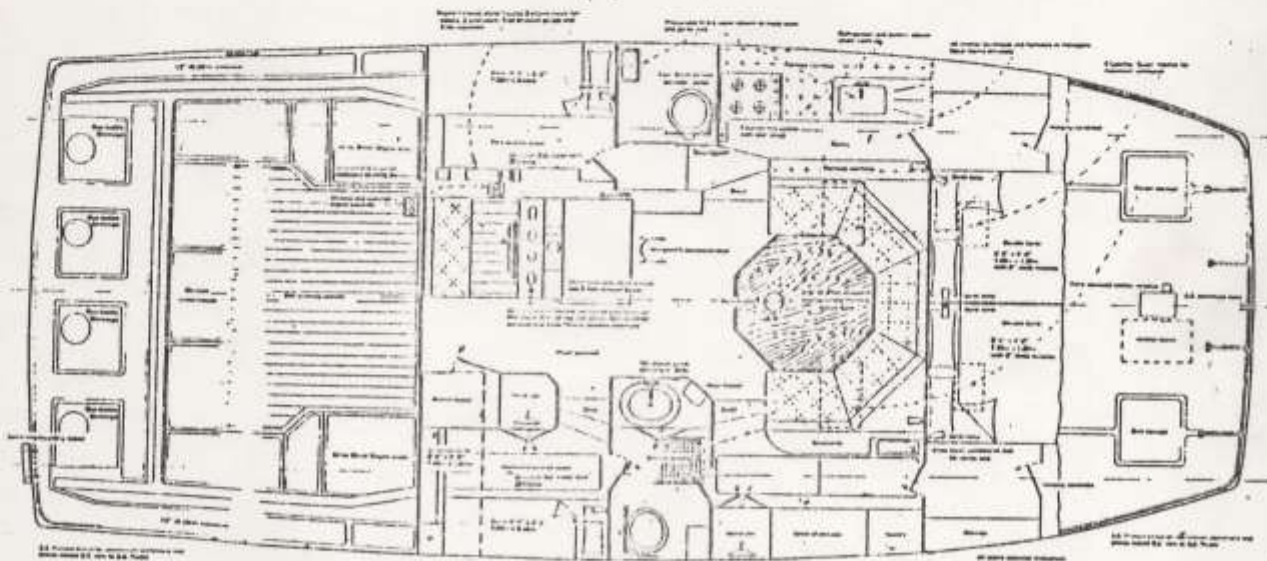
Twin installation Yanmar 3HM 30 hp. diesel engines. 2 x 40 gal. fuel tanks. 4 x 12v. Batteries. Dual station controls - inboard/cockpit.

2 x self-contained Heads, one with Shower. Gas operated Refrigerator. Galley with s.s. sink, pressurised hot & cold water system. 2 x 60 gal.s.s. water tanks. Cooker with 4 burners. Oven.

TOM LACK MULTIHULL BROKERAGE

FLAGSTAFF HOUSE, MUDEFORD, CHRISTCHURCH, DORSET

TEL: (0202) 485995 FAX: (0202) 499669



**12 metre CATALAC
GENERAL ARRANGEMENT**

CATALAC 10 metre.

Length Overall	10.3 m. (33'8")	Sail Areas: Main: 26.29sq.m. (283 sq.ft.)
Beam:	4.7 m. (15'3")	Genoa 30.94sq.m. (333 sq.ft.)
Draught:	0.84m. (29")	Berths: 2 x Double 2 x Single

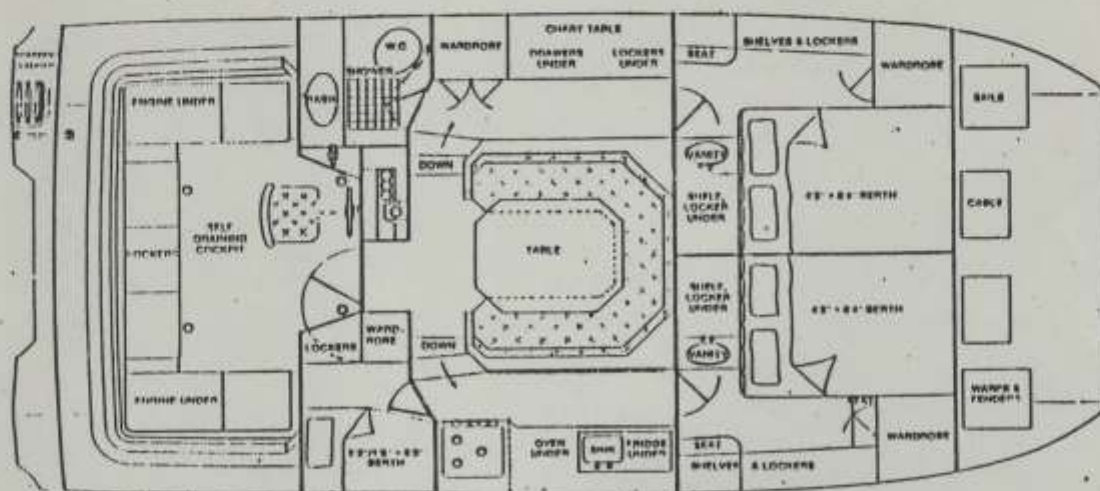
STANDARD EQUIPMENT:

Anodised Mast & Boom. Slab-reefing on Mainsail. 2 x 2-speed Halliard Winches
 Roller Reefing Forestay. Halliards & Sheets in terylene. Sailcover. Whisker Pole.
 20 kg. Bruce Anchor c/w chain & warp. Fenders Warps & Boathook Boarding Ladder.
 Anchor bollard. 4 x Mooring Bollards. Safety Harness handrail track.
 2 x Deckhead Hatches. Hydraulic Wheel Steering. Helmsman's Seat.

Sea water Head. Hot & Cold water in Heads & Galley. 3-burner Cooker. Oven & Grill.
 Refrigerator. Cushions & Carpets.

TOM LACK MULTIHULL BROKERAGE
 FLAGSTAFF HOUSE, MUDEFORD, CHRISTCHURCH, DORSET
 TEL: (0202) 485995 FAX: (0202) 499669

Accommodation plans



Fore Cabins as shown or 1 double and 1 Twin.

CATALAC - 10 metre

TOM LACK MULTIHULL BROKERAGE
 FLAGSTAFF HOUSE, MUDEFORD, CHRISTCHURCH, DORSET
 TEL: (0202) 485995 FAX: (0202) 499669

The 9 metre CATALAC was originally built with the following
STANDARD INVENTORY

Anodised Mast & Boom with Slab Reefing Mainsail. 2 x Halliard Winches. Steaming Light. 2 x Bottom-handle Sheet Winches.

Terylene Running Rigging. Main & Jib halliards. Burgee & Signal Halliards. Kicker & Topping Lift. Mainsheet & Jib Sheet with all blocks & stops.

Standing Rigging in s.s. wire. 5 Caps. 3 Lowers. 8 Bottlescrews.

Mainsail & No.1 Jib.

10 kg. KLI anchor with Chain & Warp. Pulpit. Navigation Lights. Warps. Fenders. 4 x Mooring Bollards. Anchor Bollard. Boathook. 20" Steering Wheel with chain & wire system to Twin Rudders.

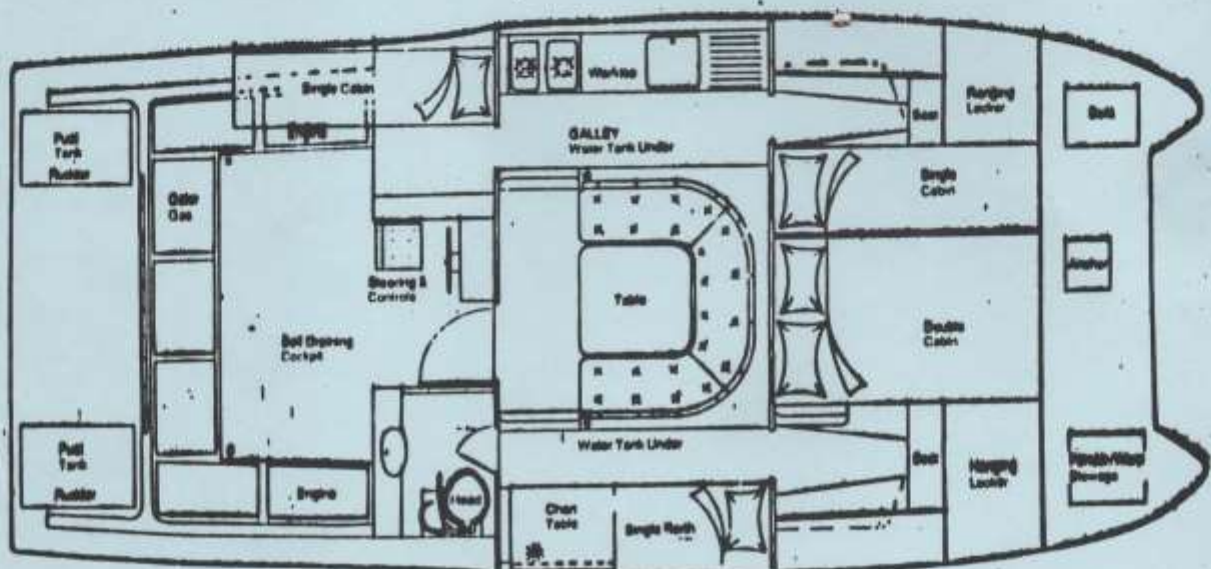
2 x Double & 3 x Single Berths (1 Double as Saloon conversion) others in separate cabins. Fibreglass Galley worktop & Sink. Portable dining Table. 2-burner Cooker with Grill & Oven piped to Calor gas in Cockpit Locker. Sea water Toilet & Washbasin in Heads Compartment. 2 x 25 gal. Fresh Water Tanks with pumps to galley sink & handbasin. Chart Table with light over. 6 x Cabin Lights Framed windows with removable hoppers.

Length -9.0 m. Beam -4.2 m. Draught -0.75 m. Sail Area -39.0 sq.m.

AMENDMENTS & ADDITIONS TO STANDARD INVENTORY ARE LISTED IN THE FOLLOWING PAGES UNDER EACH SPECIFIC CRAFT

THE NINE METRE CATALAC 30.

GENERAL ARRANGEMENT



SPECIFICATIONS

Length 9.0 metres (29' 5")
 Beam 4.2 metres (13' 9")
 Draught 0.75 metres (2' 6")

Sail Area 39 m² (420 sq ft)
 Weight 4000 Kgs (4 tons)
 Berths 2 Doubles, 3 Singles

The 8 metre CATALAC was originally built with the following
Standard Inventory

Anodised Mast & Boom with Roller or Slab reefing Mainsail. 2 x Halliard winches.
2 x bottom-handle winches. Steaming Light

Terylene running rigging. Main & Jib Halliards. Topping Lift & Kicker.
Mainsheet & Jib sheets.

Standing Rigging s.s. wire. 5 Caps. 3 Lowers. 8 Bottlescrews.

Mainsail & No. 1 Jib.

Danforth type Anchor with Chain & Warp. Pulpit. Navigation Lights. Anchor Bollard.
4 x Mooring Bollards. Warps. Fenders. Boathook. Steering Wheel with chain,
wire & gypsy to twin Rudders.

1 x Double & 3 x Single Berths with double in separate cabin.

Fibreglass Galley worktop & Sink. Portable Dinette Table.

2-Burner Cooker with Oven & Grill, piped to Calor Gas in Cockpit Locker.

Seawater Toilet & Handbasin in Heads compartment.

2 x 25 gal. Fresh Water s.s. Tanks pumped to galley sink and washbasin.

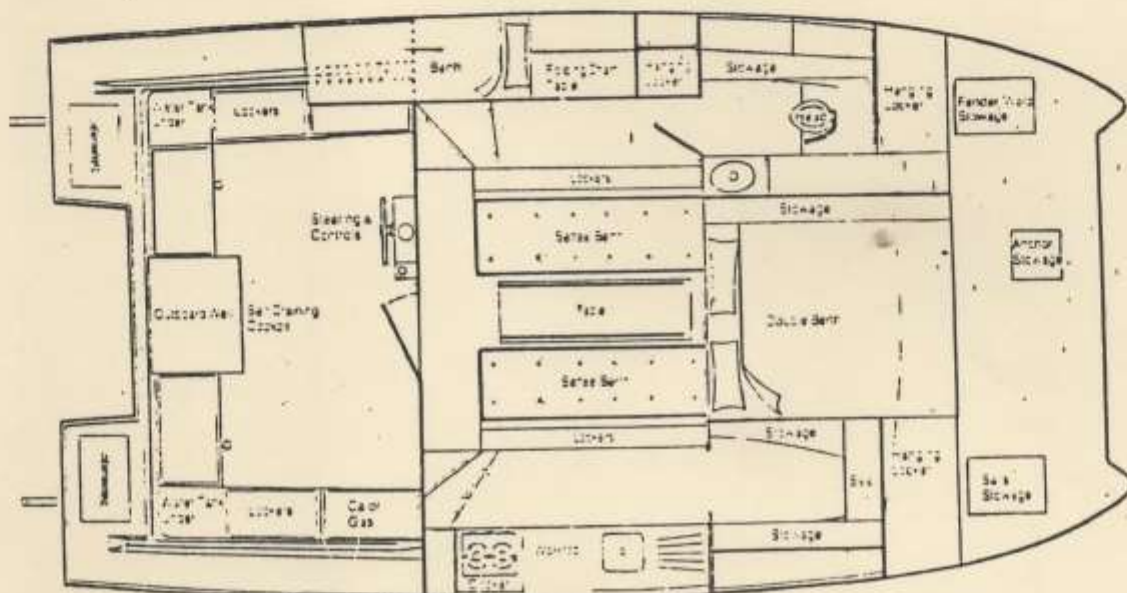
Framed Windows with removable hoppers.

Length - 8.0 m. Beam - 4.0 m. Draught - 0.6 m. Sail Area - 34.6 sq.m.

AMENDMENTS & ADDITIONS TO STANDARD INVENTORY ARE LISTED IN THE FOLLOWING PAGES UNDER
EACH SPECIFIC CRAFT

THE EIGHT METRE CATALAC

GENERAL ARRANGEMENT



SPECIFICATIONS

Length 8.3 metres (27' 3")
Beam 4.0 metres (13')
Draught 0.68 metres (2' 3")

Sail Area 35 m² (376 sq ft)
Weight 3000 Kgs (3 tons)
Berths 1 Double, 3 Single

BOBCAT 8 metre. Length: 8.0 m. (26'3") ∴ Sail Area: 21.0 sq.m.
 Beam 4.2 m. (13'8") Weight: 2,450 kgs. (2.5 ton)
 Draught: 0.7 m. (2'3") Berths: 5

STANDARD INVENTORY : Mainsail & Working Jib (three-quarter rig) Proctor Spars.
 Forestay & 2 x shrouds in s.s.
 Terylene Main & Jib Halliards, Topping Lift & Burgee halliard.

ENGINE: Outboard, with electric start & remote controls. Remote fuel tank (5 gal.)
 Engine clipped to link bar for close manoeuvring. 12v. Battery

Anchor - 15 lb Danforth type with Chain & warp. 2 x Mooring warps. 4 x Fenders.
 Boathook.

Lights. Port, Starboard, Stern & Steaming.

ACCOMMODATION: Saloon with folding table & 2 x bunk seats.
 2 x berth forward in hulls. Single berth athwartships.
 Sea water Toilet & Handbasin in heads compartment. 25 gal. watertank.
 Cooker with 2 x burners, grill & oven in 8' works surface, with
 s.s. sink. Freshwater pump to 25 gal. water tank.

CONSTRUCTION. Fibreglass sheathed, marine ply BS 1088. Hard-chine.

TOM LACK MULTIHULL BROKERAGE

FLAGSTAFF HOUSE, MUDEFORD, CHRISTCHURCH, DORSET
 TEL: (0202) 485995 FAX: (0202) 499669

BOBCAT 8 METRE Mk.1.

